



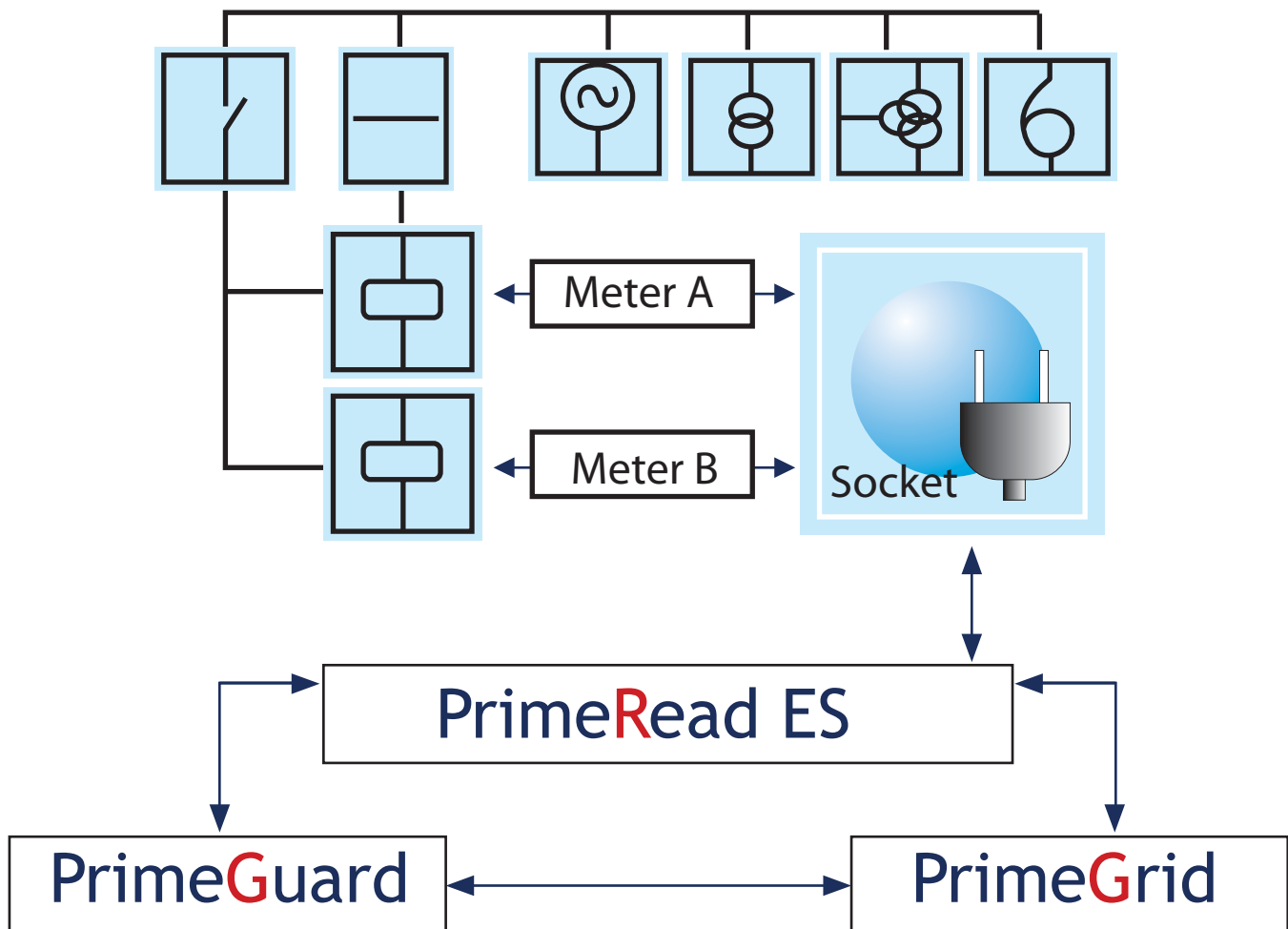
PrimeStone
Empowering



Prime™

Prime™

- Web-based application
- Report Generator
- Web services architecture for data Exchange
- Multivendor for high-end metering as well as AMI vendor support
- Multinetworking supporting major communications media
- Advanced user access including active directory
- Support for major database engines including Oracle and SQL Server
- Multilanguage support including English, Spanish and Portuguese
- User-defined business rules
- GPS coordinates
- Audit trail functionality
- Database supports massive storage



PrimeRead ES

PrimeRead ES takes care of all of your meter data collection needs, information management, reporting and metering data supervision

ID del medidor	Potencia de Trabajo	Resultado: Local Profile	Resultado: Registro	Resultado: Evento	Resultado: Programación	Resultado	Asistencia	Factor	Fecha Real
PRO00071	PONEREAALIVE 0.36	✓	✓	✓	✓	✓	✓	1	2009/02/13 11:48:04
PRO00071	PONEREAALIVE 0.28	✓	✓	✓	✓	✓	✓	1	2009/02/13 11:24:48
PRO00071	PONEREAALIVE 0.33	✓	✓	✓	✓	✓	✓	1	2009/02/13 11:00:09
PRO00071	PONEREAALIVE 0.33	✓	✓	✓	✓	✓	✓	1	2009/02/13 10:45:03
PRO00071	PONEREAALIVE 0.31	✓	✓	✓	✓	✓	✓	1	2009/02/13 11:00:18
PRO00071	PONEREAALIVE 0.38	✓	✓	✓	✓	✓	✓	1	2009/02/13 11:00:18
PRO00071	PONEREAALIVE 0.43	✓	✓	✓	✓	✓	✓	1	2009/02/13 11:00:18
PRO00071	PONEREAALIVE 0.39	✓	✓	✓	✓	✓	✓	1	2009/02/13 11:00:18
PRO00071	PONEREAALIVE 0.36	✓	✓	✓	✓	✓	✓	1	2009/02/13 11:00:18
PRO00071	PONEREAALIVE 0.36	✓	✓	✓	✓	✓	✓	1	2009/02/13 11:00:18
PRO00071	PONEREAALIVE 0.44	✓	✓	✓	✓	✓	✓	1	2009/02/13 11:00:18
PRO00071	PONEREAALIVE 0.43	✓	✓	✓	✓	✓	✓	1	2009/02/13 11:00:18
PRO00071	PONEREAALIVE 0.31	✓	✓	✓	✓	✓	✓	1	2009/02/13 11:00:18
PRO00071	PONEREAALIVE 0.36	✓	✓	✓	✓	✓	✓	1	2009/02/13 11:00:18
PRO00071	PONEREAALIVE 0.33	✓	✓	✓	✓	✓	✓	1	2009/02/13 11:00:18
PRO00071	PONEREAALIVE 0.32	✓	✓	✓	✓	✓	✓	1	2009/02/13 11:00:18
PRO00071	PONEREAALIVE 0.31	✓	✓	✓	✓	✓	✓	1	2009/02/13 11:00:18

- Intuitive graphical interface
- Expandable, allows growth in number of meter points as well as users
- Supports standard development tools for application maintenance
- Timely and accurate information
- Multinetworking, supporting major communications media available

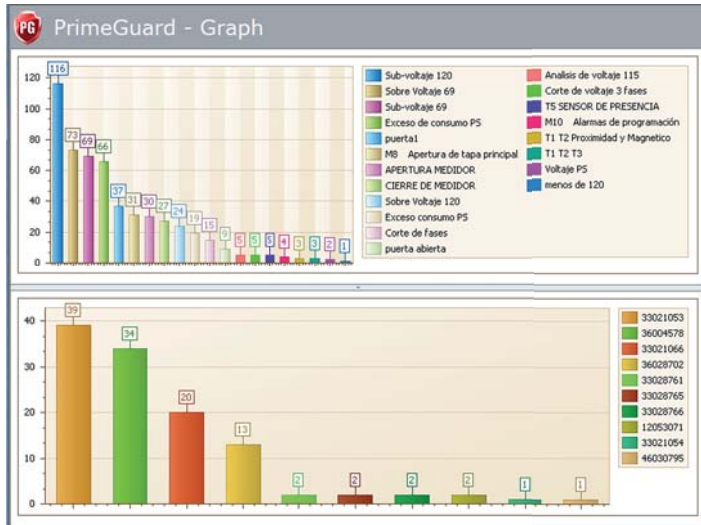


Month	Sum	Med	Total	Med	Total	Med	Total
September 2011	15	15	15	15	15	15	15
October 2011	15	15	15	15	15	15	15
November 2011	15	15	15	15	15	15	15
December 2011	15	15	15	15	15	15	15

- Reduce operating costs
- Flexible topologies
- Flexible growth with your needs and your organization
- Supports your billing requirements including complex tariffs, TOU, etc
- Timely and effortless billing
- Timely information for your internal as well as external clients

PrimeGuard

PrimeGuard is a supervisory alert and notification system for incoming data



- Fully integrated with PrimeRead ES and with our PrimeGrid smart grid energy losses and balances software
- Monitors systems, meters, modems and other types of equipment
- Generates notifications via email, SMS or Local Box which is a local user inbox inside the application
- Programming new alerts and notifications is rules-based, very easy-to-use
- Messages can be user-defined
- Conditional programming parameters for event or value occurrence
- Workflow definition and control
- Manage actions and monitor incoming data
- Monitoring can be parameterized using reports, graphics and maps

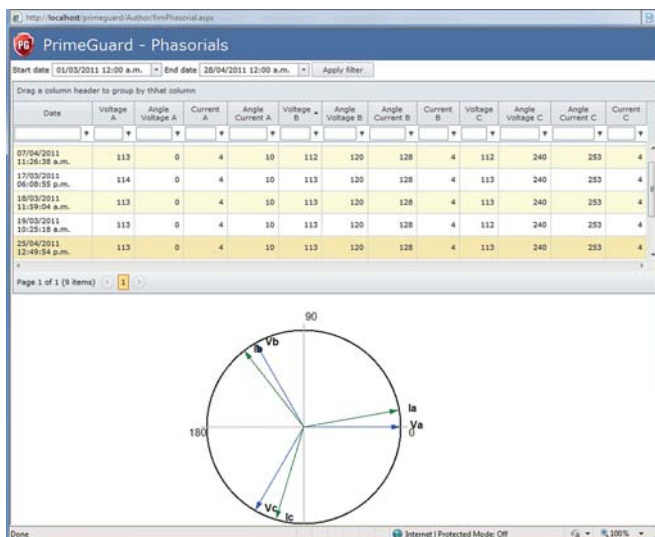
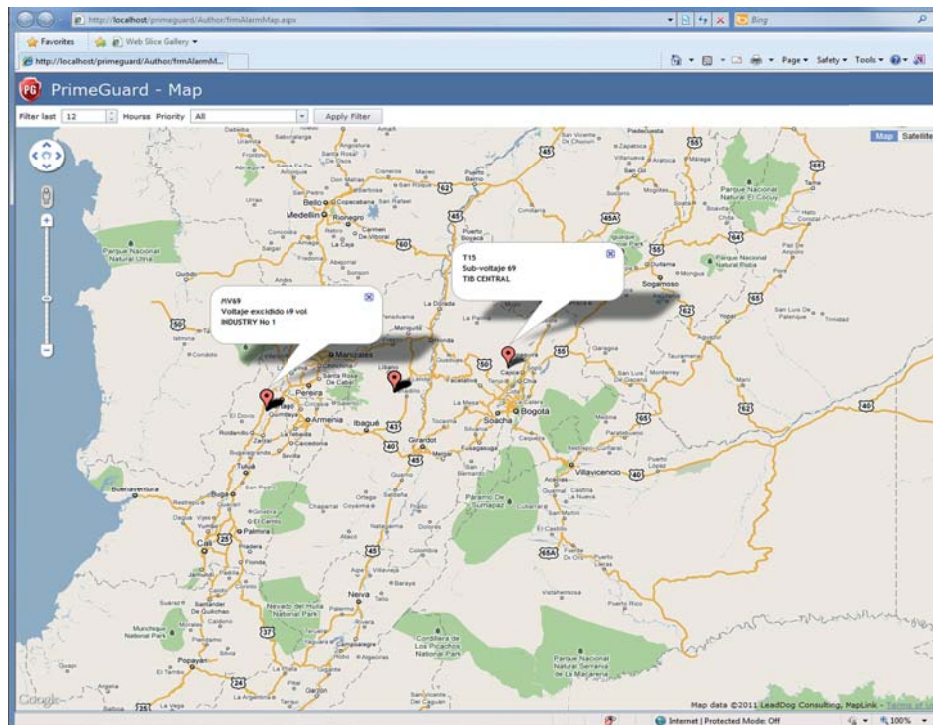
PrimeGuard Alarms

DESCRIPTION	LOCATION	PRIORITY	LAST RECORDED	ENABLED
Exceso de consumo PS	120	Urgent	20/09/2010 03:09:02 p.m.	<input type="checkbox"/>
Corte de voltaje 3 fases	719	Urgent	20/09/2010 04:07:02 p.m.	<input type="checkbox"/>
Sobre Voltaje 120	46	Urgent	20/09/2010 04:48:42 p.m.	<input type="checkbox"/>
Sobre voltaje 69	718	Urgent	20/09/2010 04:52:29 p.m.	<input type="checkbox"/>
Falla de potencia	717	Urgent	20/09/2010 05:16:19 p.m.	<input type="checkbox"/>
Sub-voltaje 120	716	Urgent	21/09/2010 11:14:00 a.m.	<input type="checkbox"/>
Sub-voltaje 69	715	Urgent	21/09/2010 11:19:21 a.m.	<input type="checkbox"/>
MS Apertura de tapa principal	712	Urgent	22/09/2010 06:22:20 a.m.	<input type="checkbox"/>
sub-cortadas	711	Normal	22/09/2010 08:38:41 p.m.	<input type="checkbox"/>
M10 Alarmas de programación	78	Normal	09/10/2010 10:00:20 p.m.	<input type="checkbox"/>
T1 Alarma en servicio (dependiente por batería)	77	Normal	09/10/2010 11:00:17 p.m.	<input type="checkbox"/>
T1 T2 Proximidad y Magnetico	76	Urgent	09/10/2010 11:00:59 p.m.	<input type="checkbox"/>
APERTURA MEDIDOR	75	Urgent	07/10/2010 12:28:28 p.m.	<input type="checkbox"/>
CERRA DE MEDIDOR	74	Urgent	07/10/2010 12:39:09 p.m.	<input type="checkbox"/>
TS SENSOR DE PRESENCIA	73	Urgent	06/10/2010 04:04:07 p.m.	<input type="checkbox"/>
T1 T2 T3	71273	Urgent	06/10/2010 12:26:23 p.m.	<input type="checkbox"/>
AV	801	Urgent	06/11/2010 10:19:27 a.m.	<input type="checkbox"/>
APERTURAMEDIDOR	44	Urgent	06/11/2010 09:01:44 a.m.	<input type="checkbox"/>
error fase a	279	Normal	05/11/2010 01:08:10 p.m.	<input type="checkbox"/>
RESET	80807	Normal	23/11/2010 08:08:51 p.m.	<input type="checkbox"/>
menos de 120	120	Urgent	29/12/2010 05:05:27 p.m.	<input type="checkbox"/>
ALARM MERTIA A FASE	447	Urgent	06/10/2011 10:24:20 a.m.	<input type="checkbox"/>
45c	111	Normal	12/04/2011 10:00:39 a.m.	<input type="checkbox"/>
Entredadigital y evento medidor	74655	Normal	08/10/2011 04:47:58 p.m.	<input type="checkbox"/>

- Easy configuration and intuitive user interface
- Groups can be configured
- User-defined notifications
- Historical information analysis and statistics of notifications, classification by frequency, devices, etc.
- Architecture is scalable and open for new alarm types and notifications from other systems

PrimeGuard

Thanks to the new communications platforms, the complexity of the systems and devices and the volume of the information gathered make it essential to have a system that continuously monitors exceptions and tracks actions, therefore using PrimeGuard will give you the following benefits



- No more surprises
- Supervises your system
- Reduces losses
- Timely response to your monitored events
- Effective control
- Effective field crew service
- Real understanding of your system's behavior
- This is the tool you need for effective management

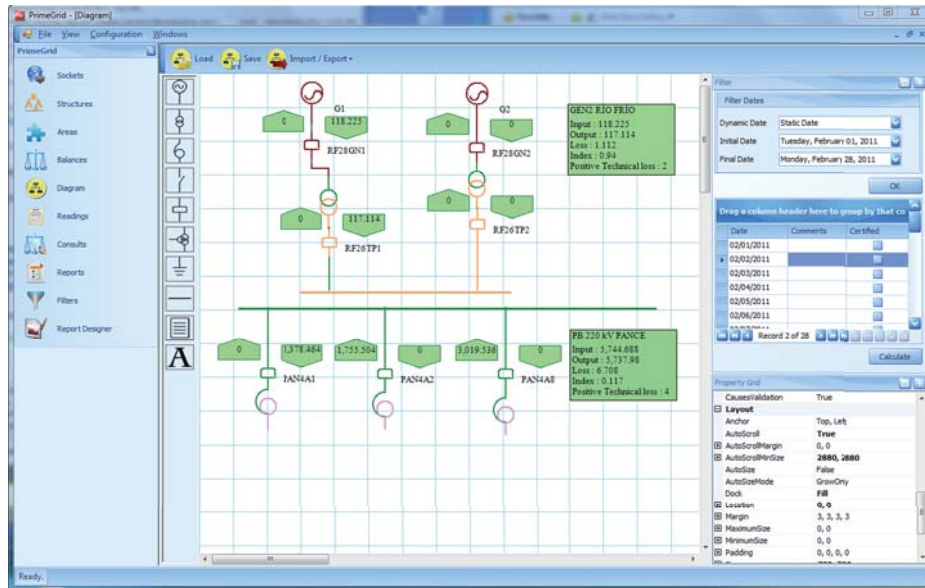
PrimeGrid

Energy Losses and Balance Management and Control

Structure	Description	Positive Product	Tension level	Temp.	Installed	Type	Site Structure
✓	L 34.5 KV VOTOCO-BUGA	4	34.5 KV	0.1	✓	Daily	barra
✓	L 34.5 KV VARGATE-PARFAY	4	34.5 KV	0.1	✓	Daily	barra
✓	L 34.5 KV ITALIA-VIRGATE	4	34.5 KV	0.1	✓	Daily	barra
✓	L 34.5 KV TOLLA-LADO	4	34.5 KV	0.1	✓	Daily	barra
✓	L 34.5 KV TENDOPRIMO-ESTRICO	4	34.5 KV	0.1	✓	Daily	barra
✓	L 34.5 KV DI BARBARA-INDUSTRIAL	4	34.5 KV	0.1	✓	Daily	barra
✓	L 34.5 KV STELLA-GRADAL	0.02	34.5 KV	0.1	✓	Daily	tree
✓	L 34.5 KV STELLA-COZZONA	0.1	34.5 KV	0.1	✓	Daily	tree
✓	L 34.5 KV SANTA BARBARA - RECICLO	4	34.5 KV	0.1	✓	Daily	barra
✓	L 34.5 KV SANTA BARBARA - NOTTE	4	34.5 KV	0.1	✓	Daily	barra
✓	L 34.5 KV SALVADORA-INCENDIARI	0.03	34.5 KV	0.1	✓	Daily	tree
✓	L 34.5 KV ROZARIELLO-ORZALE	4	34.5 KV	0.1	✓	Daily	barra
✓	L 34.5 KV ROZARIELLO-LA URENELLIS	4	34.5 KV	0.1	✓	Daily	barra
✓	L 34.5 KV ROZARIELLO-DE DONDI	0.1	34.5 KV	0.1	✓	Daily	tree
✓	L 34.5 KV BIGNONE-NOVA	4	34.5 KV	0.1	✓	Daily	barra
✓	L 34.5 KV PORNANDE-ANAPNE	0.4	34.5 KV	0.1	✓	Daily	tree
✓	L 34.5 KV PORNANDE-ORZALE	0.03	34.5 KV	0.1	✓	Daily	tree
✓	L 34.5 KV PALERMO-BUGA	4	34.5 KV	0.1	✓	Daily	barra
✓	L 34.5 KV PALERMO-COZZONA	4	34.5 KV	0.1	✓	Daily	barra
✓	L 34.5 KV NOTTE - RECICLO	4	34.5 KV	0.1	✓	Daily	barra
✓	L 34.5 KV NOTTE - ANAPNE	4	34.5 KV	0.1	✓	Daily	barra
✓	L 34.5 KV HORNO-PALERMO	4	34.5 KV	0.1	✓	Daily	barra
✓	L 34.5 KV HORNO-BUGA	4	34.5 KV	0.1	✓	Daily	barra
✓	L 34.5 KV LADO SAN PEDRO	4	34.5 KV	0.1	✓	Daily	barra
✓	L 34.5 KV LADO-PARFAY	4	34.5 KV	1.1	✓	Daily	barra
✓	L 34.5 KV LADOEN 125 - LA GIOIA	0.1	34.5 KV	0.1	✓	Daily	tree
✓	L 34.5 KV SANJESSE-COZZONA	0.1	34.5 KV	0.1	✓	Daily	tree
✓	L 34.5 KV INDUSTRIAL LA UNION 11...	4	34.5 KV	0.1	✓	Daily	barra
✓	L 34.5 KV INDUSTRIAL-BUGA	4	34.5 KV	0.1	✓	Daily	barra

- Fully integrated with PrimeRead ES
- Fully integrated with PrimeGuard
- Allows you to import data from other corporate information systems
- Allows you to import existing energy structures
- Web-based for intranet or internet use
- Graphical user-interface with one-line diagram for energy structure creation
 - One-line diagram creation
 - Zoom in and out functionality
 - Intersection and follow-up lines
 - Summary of Energy Losses by structure
 - Update and calculation of the diagram
 - Nomenclature by tension level
- Automatic or manual generation, loss calculation, indexes and certified balances
- Automatic structure closure
- Historical register and versioning of the balances for analysis and tracking
- Native reporting tool

PrimeGrid



- Detect and report on structures based on the level of losses
- Detect missing information or readings to complete balances
- Easy reporting
- Graphical summary
- Availability of periodic energy balance for all the energy structures
- Graphic interface using one-line diagrams that show energy flows at each metering point
- User access according to different roles or profiles
- High return on investment
- Enables quick action for quick results
- Generic tool for energy losses
- Allows efficient detection of losses



Primestone International LLC

Primestone SA

As standards, specifications, functionality and designs develop over time; always ask for confirmation of the Information given in this publication

Trademarks are owned by their respective companies

Prime, PrimeRead, PrimeRead ES, Prime Smart Grid, PrimeGuard and PrimeGrid are service marks of Primestone.

© 2011 – Primestone SA & Primestone International LLC – All rights reserved



www.primestone.com